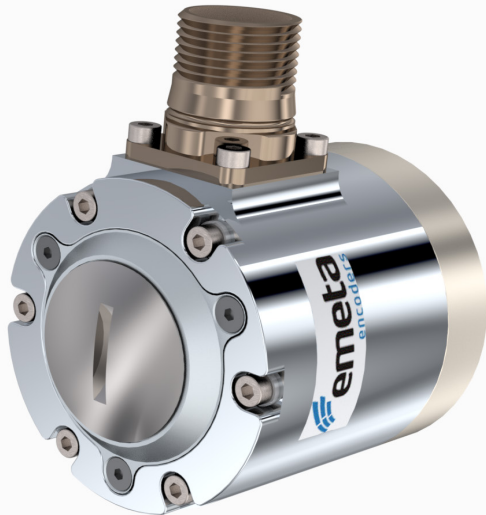


# PRODUCT INTRODUCTION



## MB 480

### Heavy duty encoder

A new series of incremental encoders for harsh and demanding environments.

# PRODUCT INTRODUCTION



Conical hollow shaft

## MB 480

Heavy duty incremental encoder

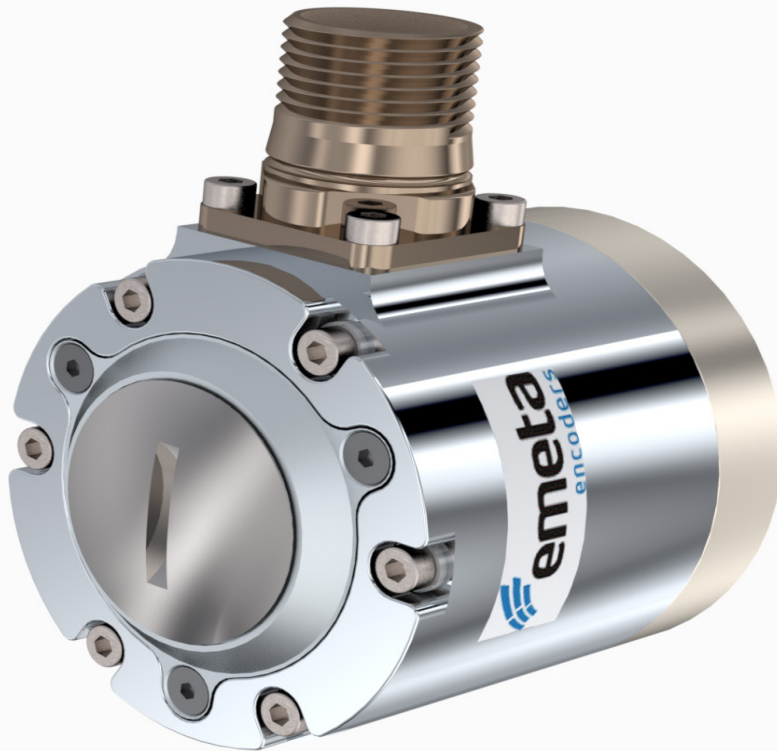
### BUILT TO LAST

The latest encoder from Emeta designed for harsh and demanding environments.

This series offers the versatility of various shaft options. From through hollow shaft to semi hollow shaft and others. This series offers a robust incremental encoder with flexible mounting options and smaller dimensions than regular heavy duty encoders.



## PRODUCT INTRODUCTION



Back of encoder

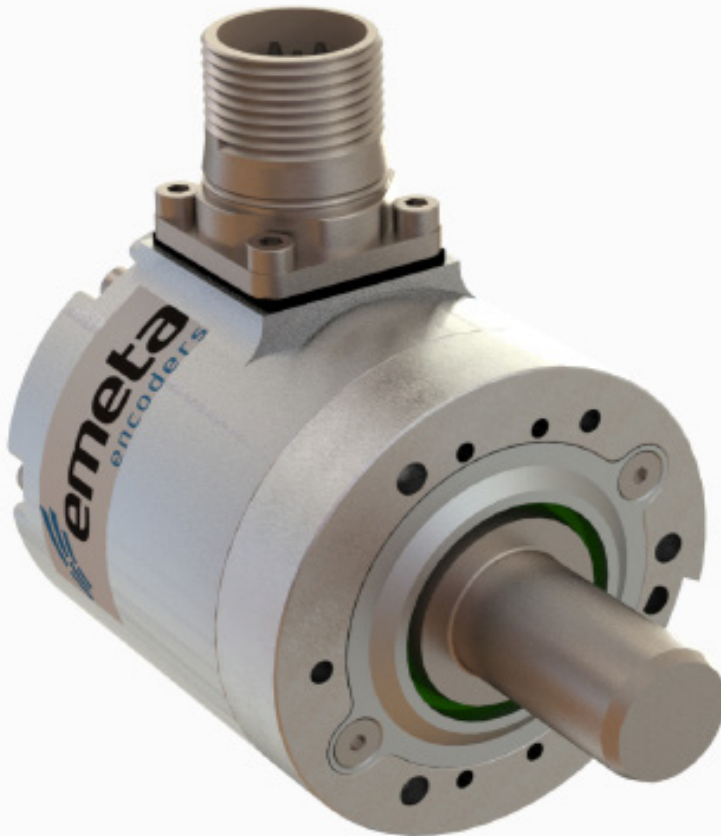
# MB 480

Heavy duty incremental encoder

## SOME FEATURES

- \* Enlarged ceramic, non conductive, sturdy bearings
- \* Short circuit and reversed polarity proof
- \* Dust and waterproof IP67
- \* Standard 7-35Vdc or 5Vdc Power Supply

# PRODUCT INTRODUCTION



Solid shaft

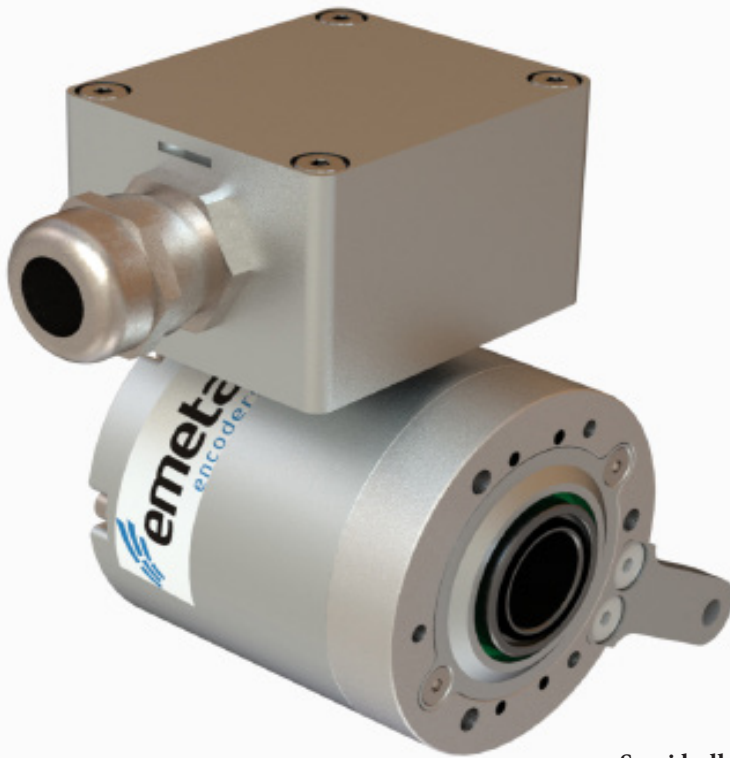
## MB 480

Heavy duty incremental encoder

### SHAFT OPTIONS

- 10-17 mm semi hollow shaft
- 10-16 mm full trough hollow shaft
- 1:10 max 17 mm conical shaft
- 10-25 mm solid shaft

# PRODUCT INTRODUCTION



Semi hollow shaft with terminalbox

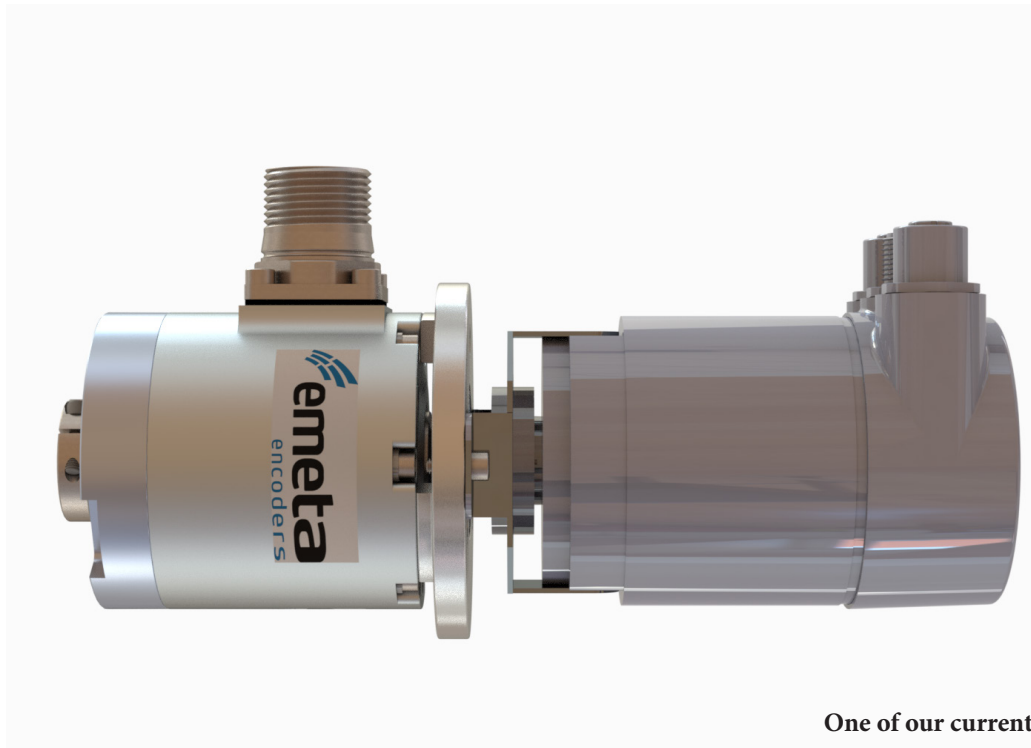
## MB 480

Heavy duty incremental encoder

### CONNECTION

Radial M23 Male Connector, CCW  
Radial cable, 5m 8x0,25 TP/PUR with screen  
Terminal box with cable gland for  $\varnothing 6$ - $\varnothing 12$ mm

# PRODUCT INTRODUCTION



One of our current projects

## MB 480

Heavy duty incremental encoder

### FLEXIBILITY

We help our customers with their projects. Most of our encoders can be customized to fit the demands of your application.

For more info visit [www.emeta.se](http://www.emeta.se)